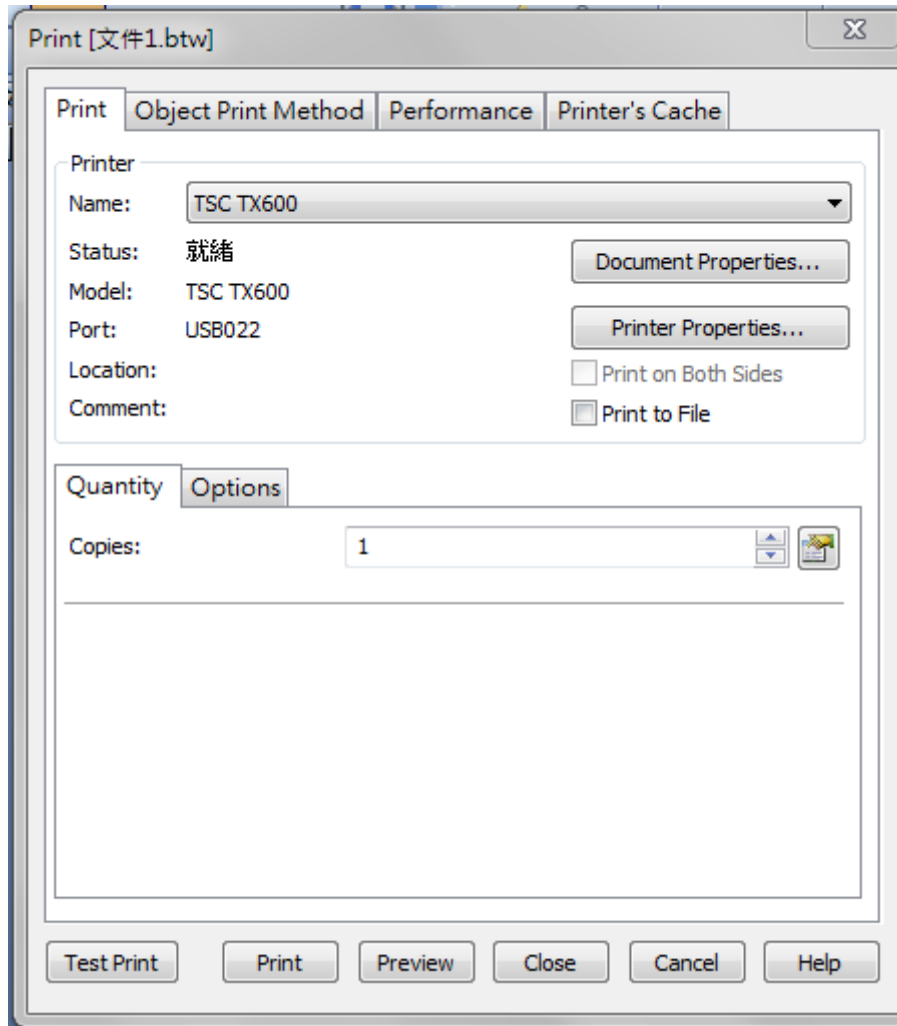


## How to Adjust Tear Position in Bartender

Step 1. Select “**Printer Properties**” button.



Step 2. Select “**Stock**” tab and manual adjust “**Feed Offset**” to positive value or negative value.

Like: **2.0 mm** or **-2.0 mm**

The screenshot shows the 'TSC TX600 - 內容' window with the 'Stock' tab selected. The 'Media Settings' section has 'Method' and 'Type' both set to 'Use Current Printer Setting'. The 'Media Handling' section has 'Post-Print Action' set to 'Tear Off', 'Occurrence' set to 'After Every Page', and 'Feed Offset' set to '2.0 mm'. The 'Position Adjustments' section has 'Use Current Printer Settings' checked and 'Vertical Offset' set to an empty field. At the bottom, there are three buttons: '確定' (OK), '取消' (Cancel), and '說明' (Help).