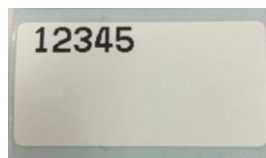
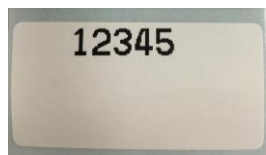
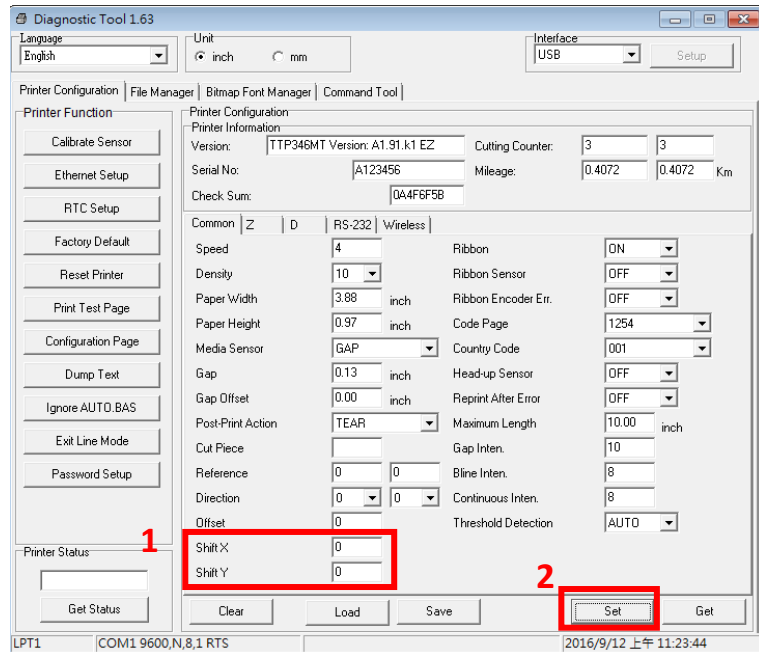


How to Adjust Print Position

Print result.



Original Settings



1. Input Range:

-XXX ~ +XXX

(203DPI:

1mm=8 dots)

(300DPI:

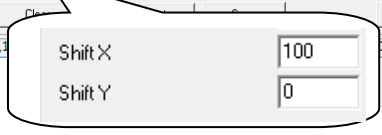
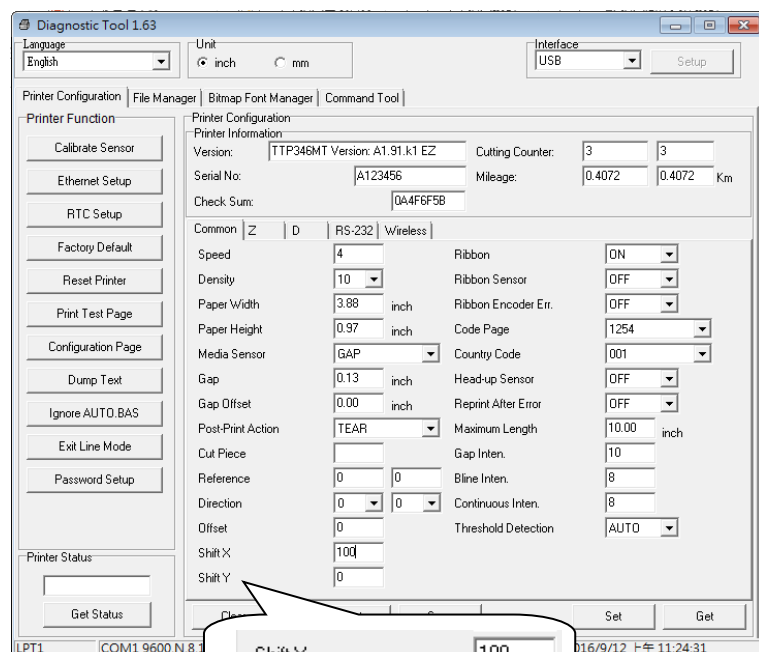
1mm=12 dots)

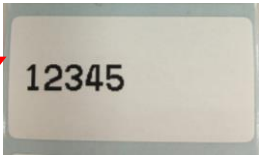
(600DPI:

1mm=24 dots)

2. Press Set

Shift X





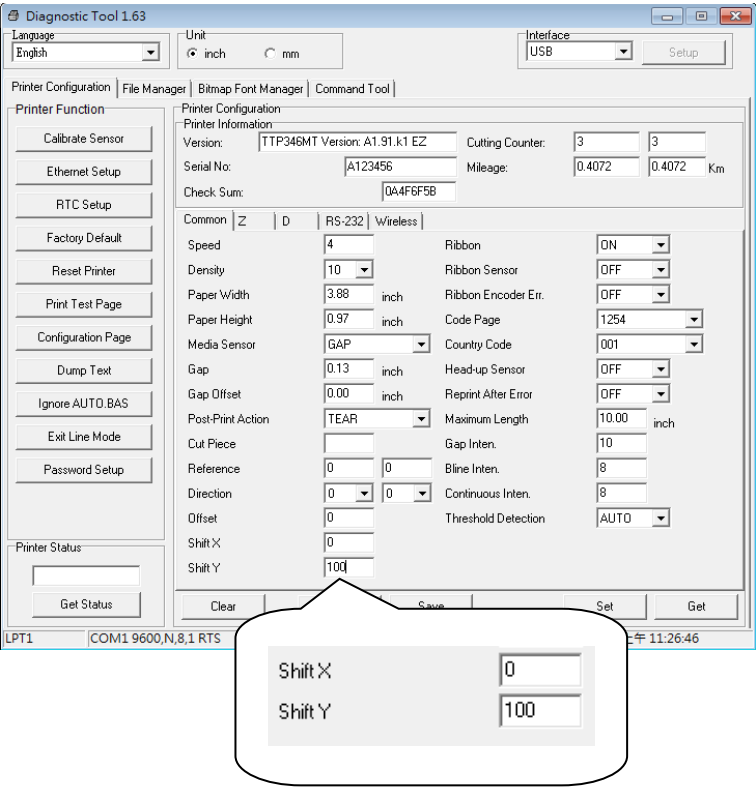
1. Input Range:

-XXX~+XXX

(203DPI:
1mm=8 dots)
(300DPI:
1mm=12 dots)
(600DPI:
1mm=24 dots)

2. Press Set

Shift Y



The screenshot shows the 'Diagnostic Tool 1.63' window. The 'Printer Configuration' tab is active. In the 'Printer Information' section, the 'Serial No.' is 'A123456'. In the 'Common' section, the 'Shift Y' field is set to '100'. A callout box highlights the 'Shift X' and 'Shift Y' fields, showing '0' and '100' respectively.